

## 24/7 Golf Return Golf Net Assembly Instructions

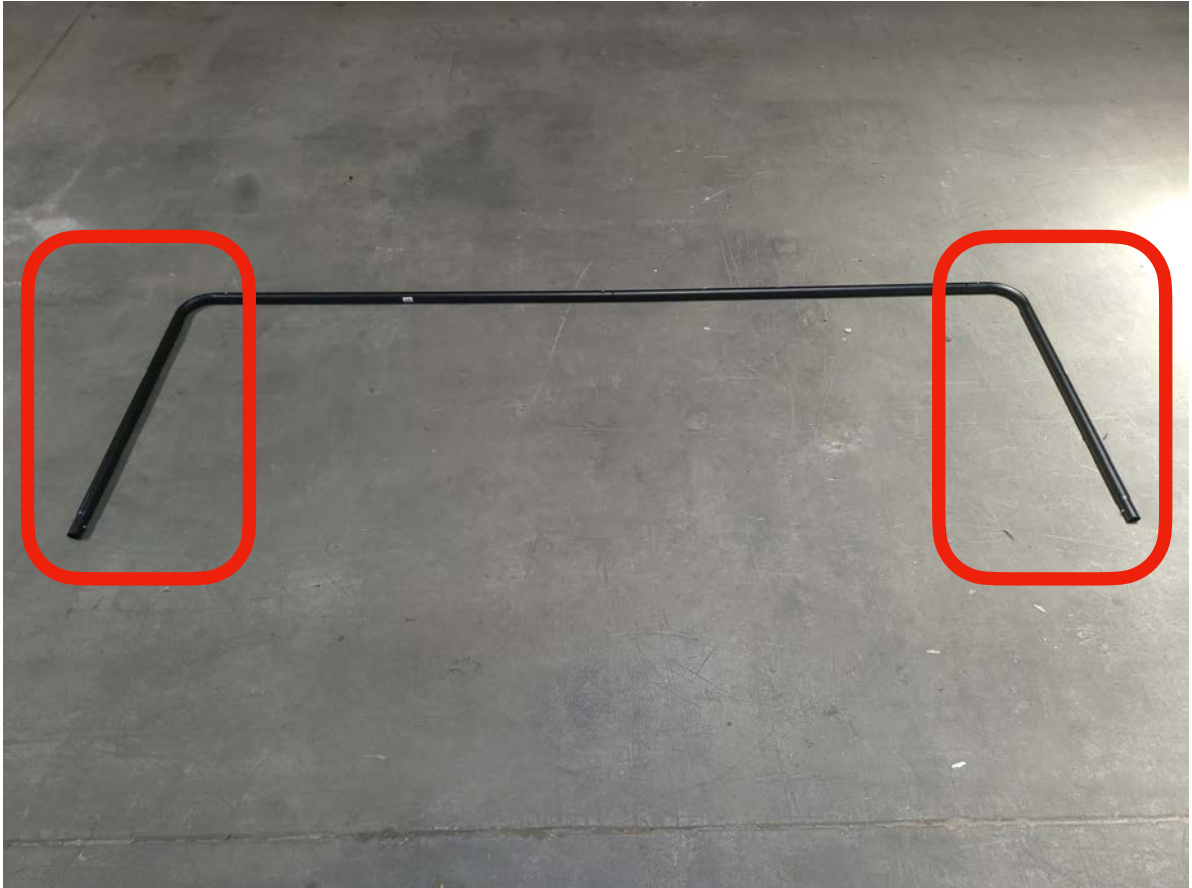
Thank you for purchasing a 24/7 Golf Return Golf Net. Your net comes in two boxes containing the below items



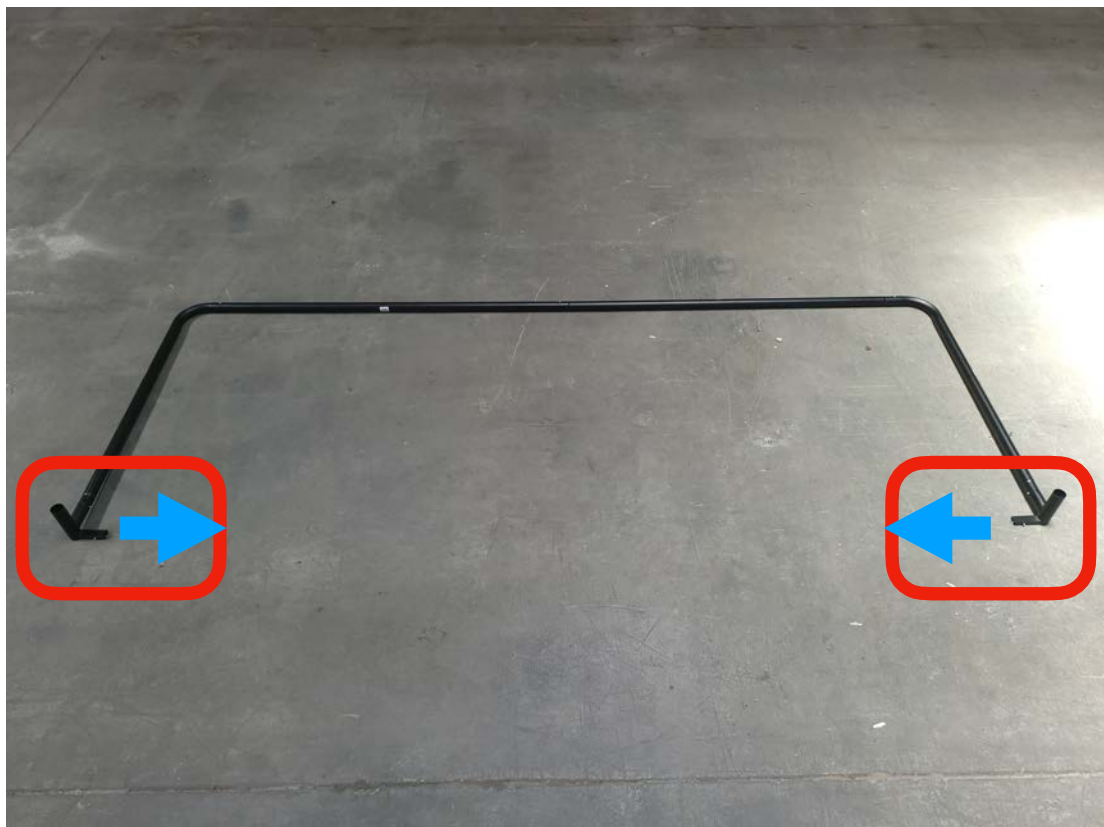
1) Connect 1 x 1A and 1 x 2B together



2) Take 2 x 3C and connect one to each end of the 1A-2B pole, creating a U shape



3) Take 2 x Corners and attach them to the end of each 3C, making sure that the rectangular connections are pointing inwards towards each other, and the round connections are pointing upwards

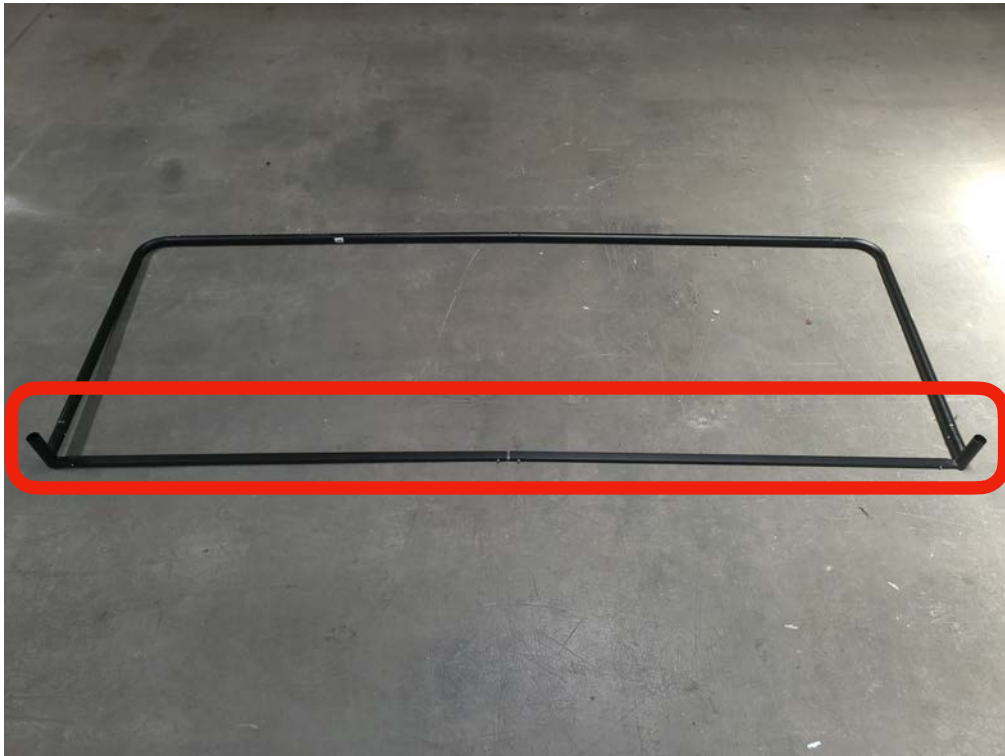


4) Take 2 x Flats and 1 x Connector. Use the connector to attach the 2 x Flats together by removing the included screws, aligning the hole in the flat with the hole in the connector and tightening with a screw driver. Repeat for all four screws



5) Connect one end of the flat bar to the connector. **NOTE: This will create approximately a 10cm (4") gap at the opposite end.**

6) Using force, pull in the opposing connector and attach the 2nd end of the flat bar. **Note, it is recommended to press in the locking pins one-by-one, then gently tap on the outside of the connector with your hand or a mallet (if handy) to then engage the locking pins**



7) Take 2 x 4C and insert the straight section into the round connections of each of the two corners



8) Take the main net. Attach the lower sleeves to the 2 x 4C installed in step 7.  
**IMPORTANT: The logos must face forward towards the hitting area**



9) Connect 1 x 5A, 1 x 6C and 1 x 3C together. NOTE: The connector of the 3C curved end should face upwards when placed on the ground. Repeat again to create another 5A-6C-3C



10) Attach 1 x Triangle Net to each 5A-6C-3C. **IMPORTANT:** The Velcro strip of the Triangle Net should be facing the floor once installed



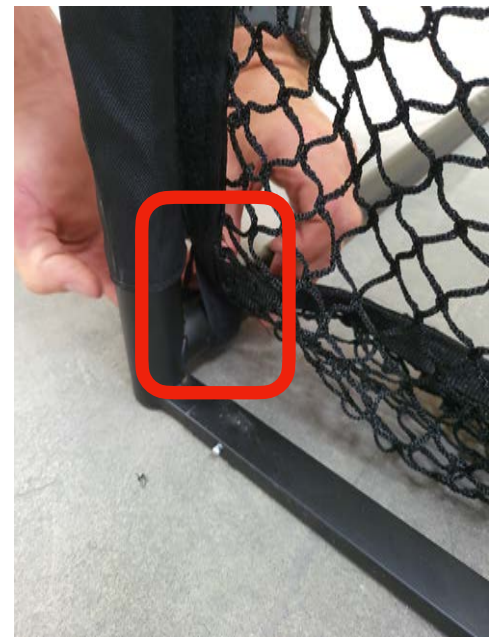
11) Connect 1A & 2B. Thread the 1A-2B pole thru the logo sleeve. Connect the 1A-2B pole to the 3C connections from step 10, then lay the assembled top section on the floor.



12) **IMPORTANT: TWO PEOPLE REQUIRED.** Attach the upper section of the net frame to the lower section of the net frame.



13) Attach the Triangle Net to the Main net by velcro, then secure the lower section of the main net to the frame using the loop provided



14) Take 1 x Bungee cord and connect it to the exposed section between the upper and lower frame. Connect a filled sand bag to the other end. Place the sand bag far enough back so that the cord is tensioned. Repeat for the opposite side



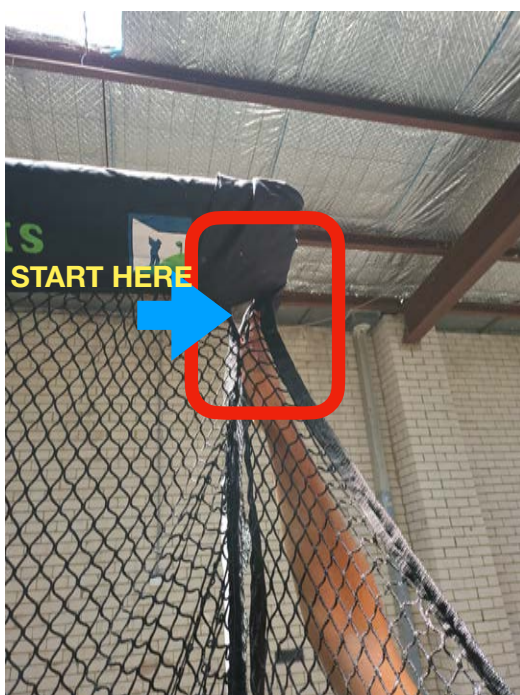


## HOW TO ATTACH OPTIONAL SIDE NETTING KIT

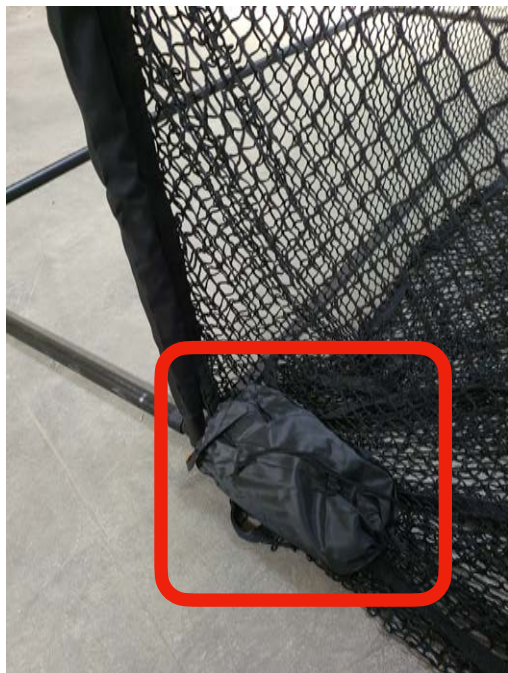
1) Take the pair of side nets out of the box. There is a specific net for both the left and right hand sides, which can be identified by the small white tag stitched onto each net; "R" for Right, being the Right Hand Side of the net as you look at it from the hitting position, and "L" for left. The white label indicates the bottom of the side net



2) Attach each side net, starting from the top, to the velcro of the main net using velcro. Note, the side nets are taller than the 24/7 Golf Return Golf Net, so there will be excess net on the floor by design. If required, use a cable tie to secure the top section of the side net to the main net



3) Fill four of the included sand bags. Place two at the base of the side net where the side net meets the main net frame. Attach the other two sand bags to the end of the side net. Place them in such a way that tensions the side netting as shown



For further assistance please contact [play@24-7.golf](mailto:play@24-7.golf)